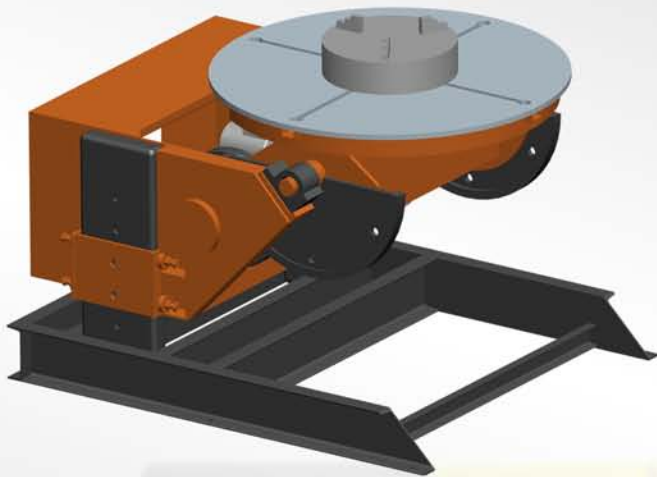


ALL TIME

Positioner



All time standard line of ATP Positioners offer capacities from 5000 kg to 20 tons with custom built models for up to 100 tons. Each unit is supplied with a control pendant, but it is capable of being controlled from an external controller to function as a component of an integrated system.

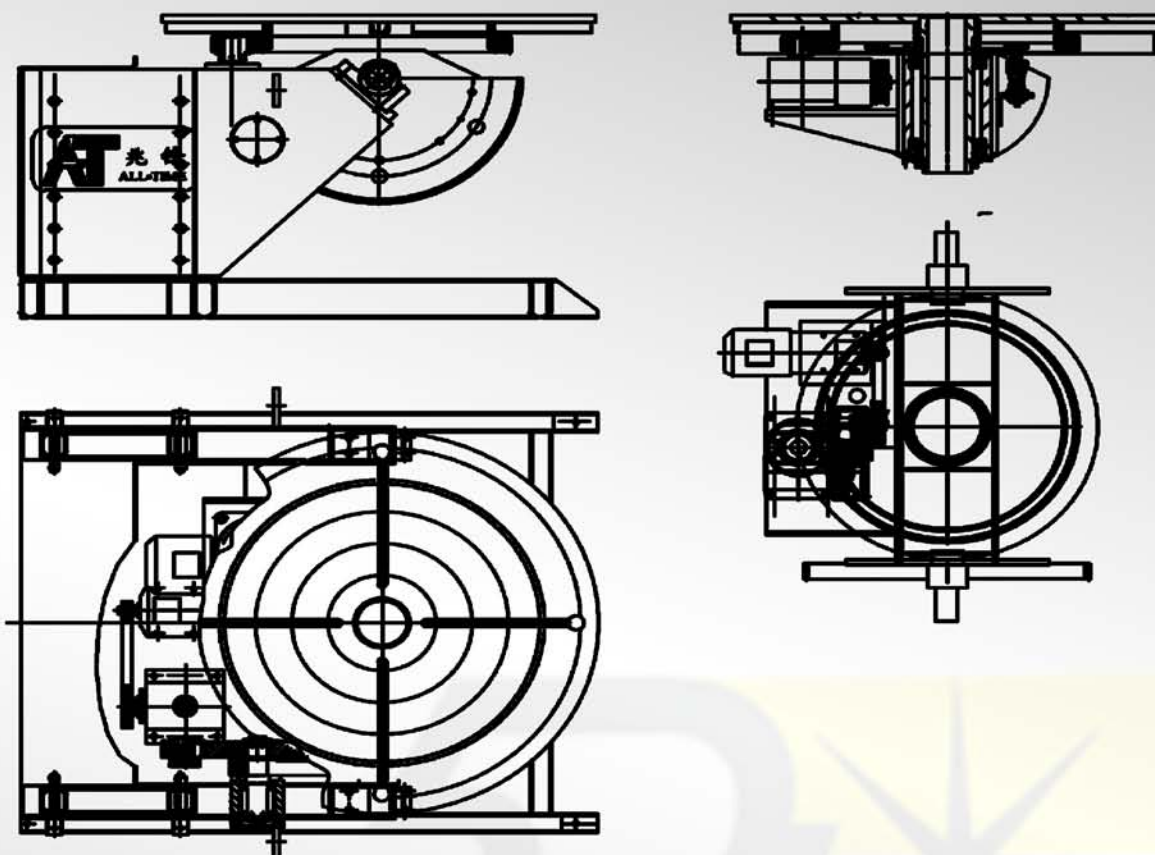
Turntables (Model ATT) and Headstock Positioners (Model AHS) are also available upon request.



Features:

- 1) Mounted on the base with four rigid posts, free standing with fully rated load, adjustable centerline height.
- 2) Trunnion is precision machined to provide smooth tilt and housing for face plate spindle bearings.
- 3) Gear ratio of the reducer provides self locking of the tilt axis in any position at any load within the designed rating
- 4) Limit switches to prevent over-travel, rapid travel function to minimize down time.
- 5) Machined face plate with radial slots for parts mounting. Face plate spindle rotates on pre loaded, tapered roller bearings to provide precise rotation.
- 6) Preloaded tapered roller bearings are used to carry the specified welding current to eliminate arcing and surface deterioration.

All Time ATP Series Titring Positioners:



Reference data:

Model	Capacity (MT)	Eccentricity (mm)	Center of Gravity (mm)	Rotation Speed (RPM)	Tilt Angle	Face Plate Diameter (mm)	Grounding Capacity (A)
ATP 0.5	0.5	300	300	0.06-1.8	135	800	1000
ATP 1	1					850	
ATP 1.5	1.5					1000	
ATP 2	2			1200			
ATP 3	3			1500			
ATP 5	5			1800		2000	
ATP 10	10			2000			
ATP 15	15			2500		3000	
ATP 20	20			2000			
ATP 30	30			2500			
ATP 50	50			0.01-0.25		2500	
ATP 100	100			0.01 - 0.32		3000	

Note: Models and specifications subject to change without notice

Visit us at: www.alltimewelding.com

